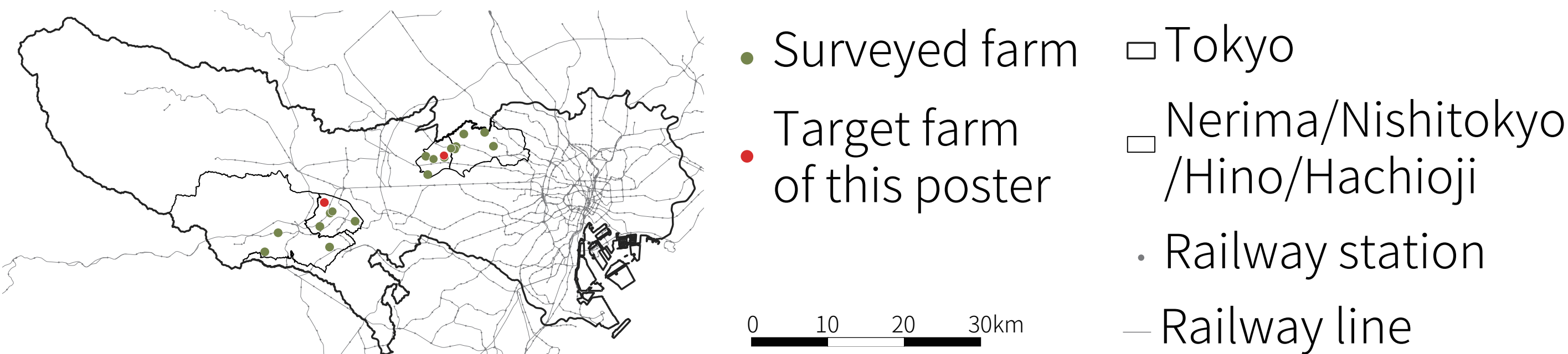


東京大学 (The University of Tokyo) 久恒 沙希 (Saki Hisatsune)

農住混在市街地において、都市住民はどのように「農」と触れ合っているのか？
In neighborhoods with urban-rural mixture, how are urban residents getting in touch with agriculture?

農園利用者へアンケート調査を実施し、その利用実態を農園の立地状況や利用者属性・利用者が居住する市街地の状況ごとに明らかにする

A questionnaire survey will be conducted to identify spatial characteristics and user's demographic information including place of residence.



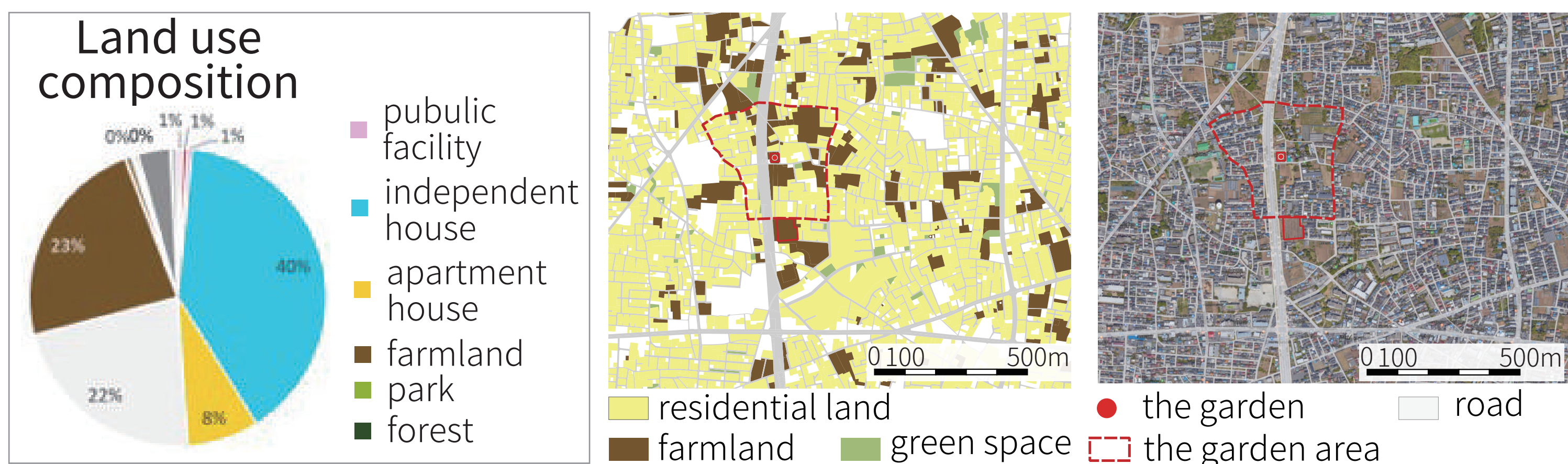
Questionnaire item	Daily life	garden use situation	
Basic attributes	vegetable direct sales store usage	motivation to use	year of use
sex		motivation for selection	working time
age	park usage		
postal code	walking habit	frequency of going to the garden	how to use the harvest
	housing situation		
garden name	housing form	time required for work/once	frequency of consultation with the owner
occupation			
household composition	housing ownership relationship	means to go to the garden	Frequency of participation in lesson on cultivation methods
child age	interest in garden when you decide where to live	time required for going to the garden	event participation frequency
car ownership	the size of home garden	number of partitions used	satisfaction with use
	home gardening	area used	

● 農園概要／ overview of the garden

Number of partitions	54	consultation with the owner	not implemented
garden area	760 m ²	lesson on cultivation methods	not held
partition area	12 m ² /1 partition	event	not held
fee	10,000yen/2year	visit by car	prohibited

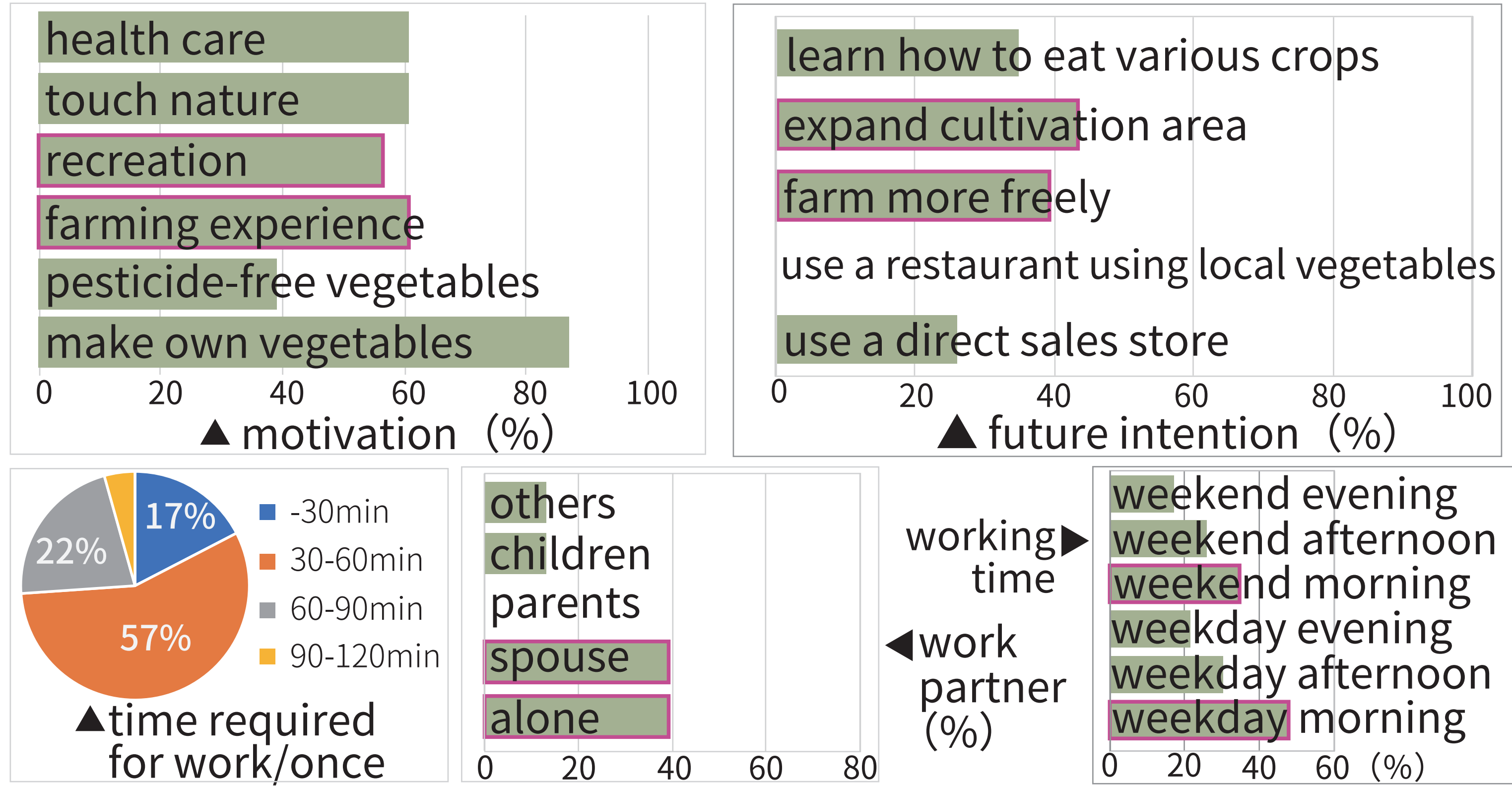
農園周辺市街地状況
／ urban conditions around the garden

area net building coverage ratio	30%	population density	88people/ha
area net floor area ratio	57%	aging rate	29%
average Independent housing coverage ratio	47%	personnel per household	2.5 people
		home ownership rate	78%



アンケート集計結果／ aggregate results

sex	male	74%	household composition	single	17%	housing ownership relationship	owning house	74%	
	female	26%		couple	39%		rent	26%	
age	-64	35%		two generations	35%		home gardening	do	43%
	65-74	35%		three generations	9%			don't	57%
	75-	30%							
age at the start of use	-64	50%	housing form	independent	59%				
	65-74	36%		apartment	41%				
	75-	14%							

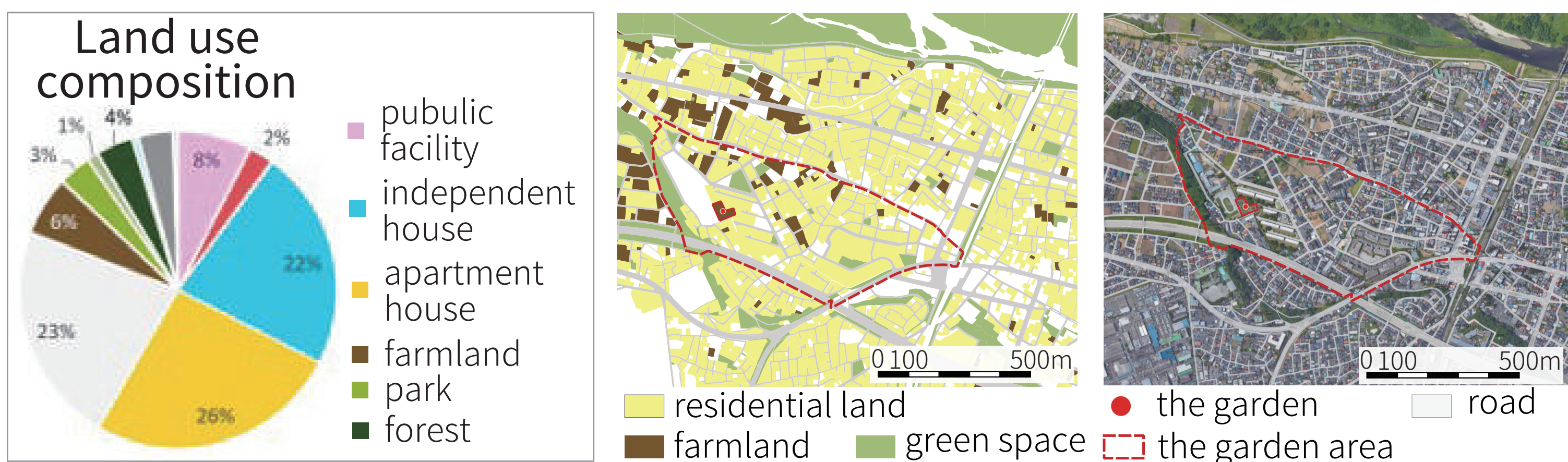


● 農園概要／ overview of the garden

Number of partitions	85	consultation with the owner	not implemented
garden area	2333 m ²	lesson on cultivation methods	not held
partition area	20 m ² /1 partition	event	not held
fee	6,000yen/year	visit by car	prohibited

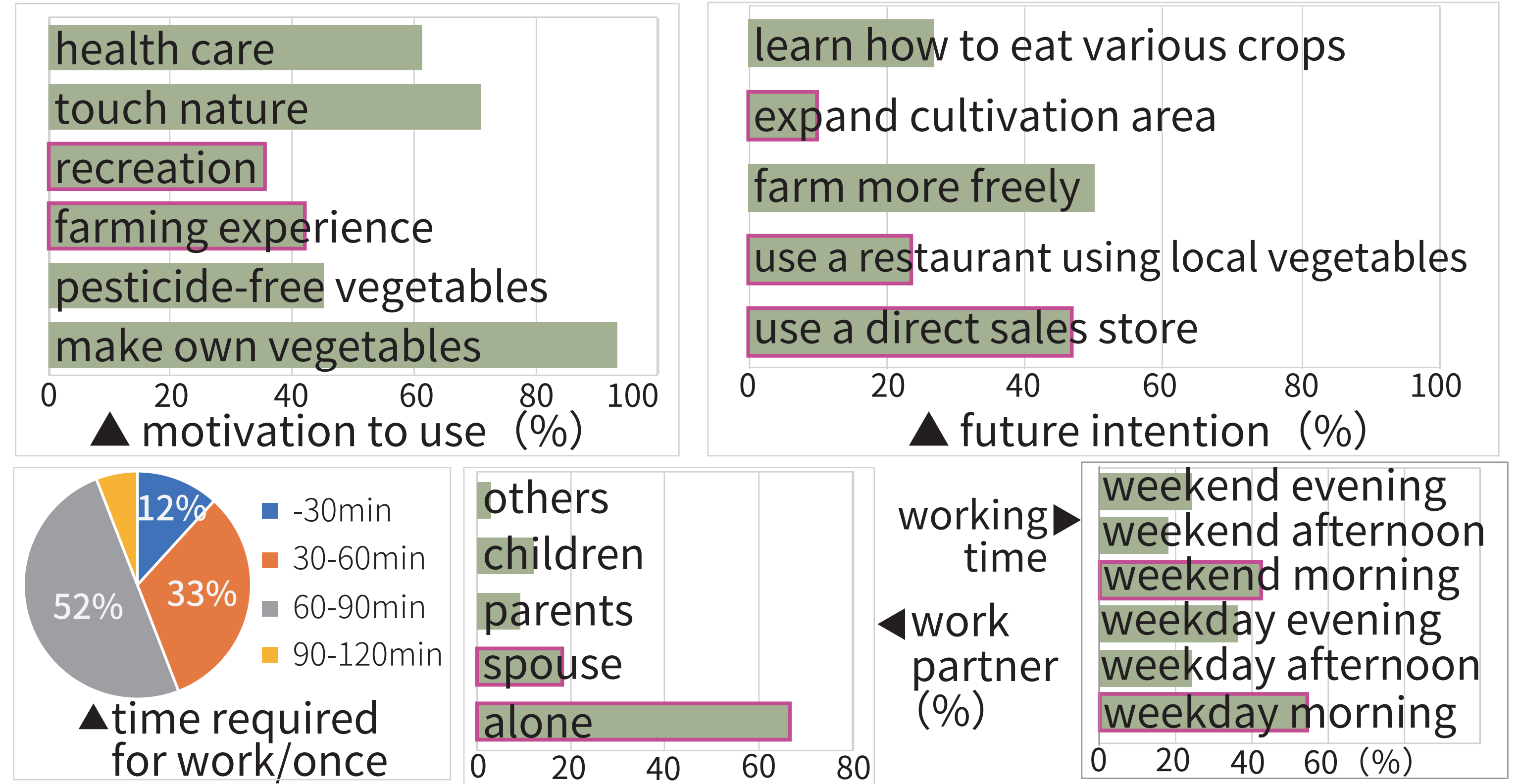
農園周辺市街地状況 ／ urban conditions around the garden

area net building coverage ratio	27%	population density	124people/ha
area net floor area ratio	61%	aging rate	22%
average Independent housing coverage ratio	43%	personnel per household	2.1 people
		home ownership rate	37%



アンケート集計結果

sex	male	74%	household composition	single	9%	housing ownership relationship	owning house	76%
	female	26%		couple	50%		rent	24%
age	-64	31%		two generations	38%		home gardening	do
	65-74	43%		three generations	3%	don't		61%
	75-	26%						
age at the start of use	-64	60%	housing form	independent	63%			
	65-74	40%		apartment	37%			
	75-	0%						



考察と今後の展開／ consideration and the next deployment

上記 2 農園の調査結果から、作業相手の有無と年齢・都心からの距離の関係性や農園周辺の農地率と農作業への関心の高まりの関係などが伺えた。

今後、その他の農園との比較や、農園利用者が居住する地域の市街地状況の分析を行い、利用者属性・市街地状況ごとの農園利用状況について考察を深めていきたい。

Based on the survey results of the two gardens mentioned above, we were able to ask about the relationship between the existence of work partners and the age, and the relationship between the ratio of farmland around the garden and increased interest in farming. In the future, the comparison with other farms and the analysis of the urban area in the area where the users live will be conducted to deepen the consideration