

# How can cities in the urban fringe thrive in the future? A new teleworking lifestyle

大都市周縁部におけるこれからの暮らしとは  
-テレワークを活用した新たなライフスタイル-

David Mason<sup>1</sup>, Yu Matsumura<sup>1</sup>, Ken Muramatsu<sup>1</sup>, Jasmine Zhang<sup>2</sup>  
<sup>1</sup>The University of Tokyo <sup>2</sup>Tongi University

**EMERGING PROBLEMS**

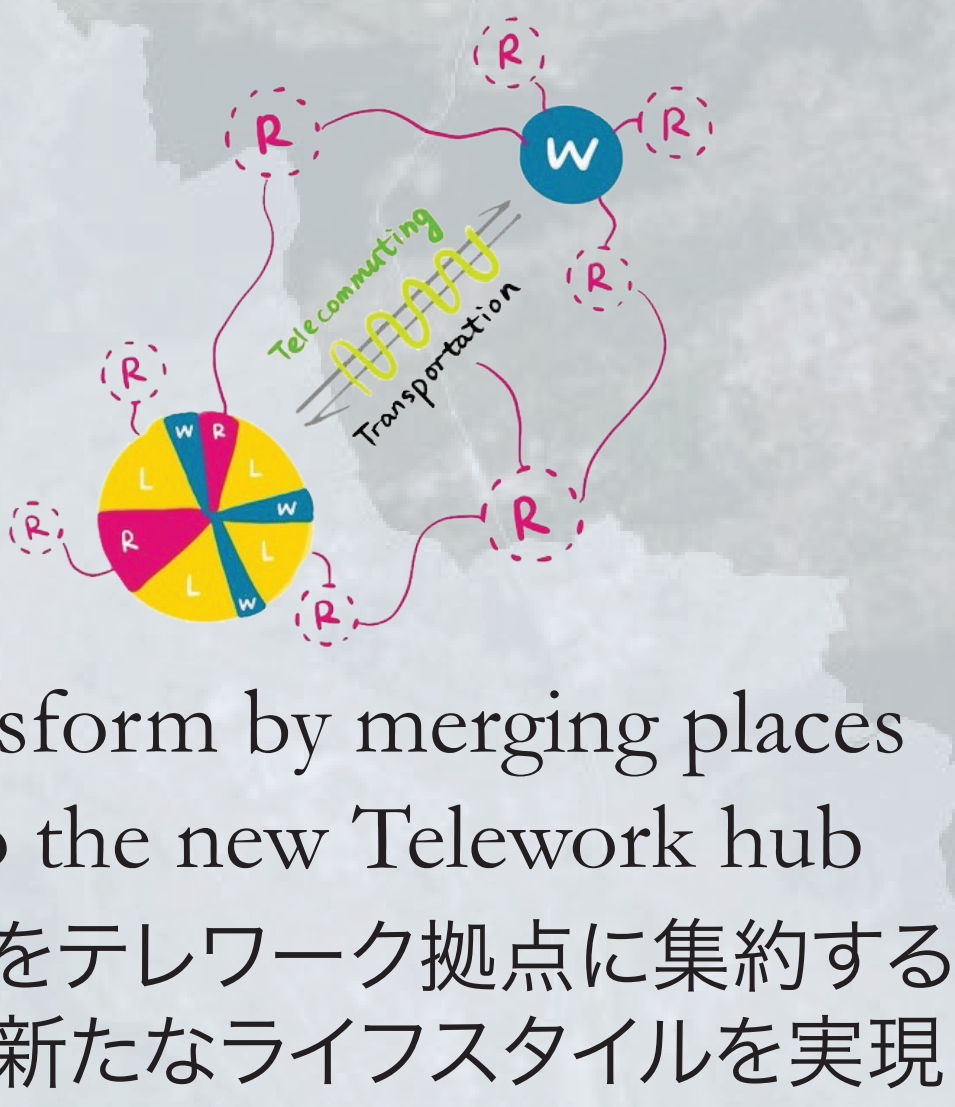
Shrinking & Ageing Population  
Decrease in farmland  
Decrease in Danchi demand

**EMERGING SOLUTIONS**

Internet & Communications Technologies  
Big Data                      5G



## PROPOSAL: TELEWORK HUB



**TELENODE**  
テレノード

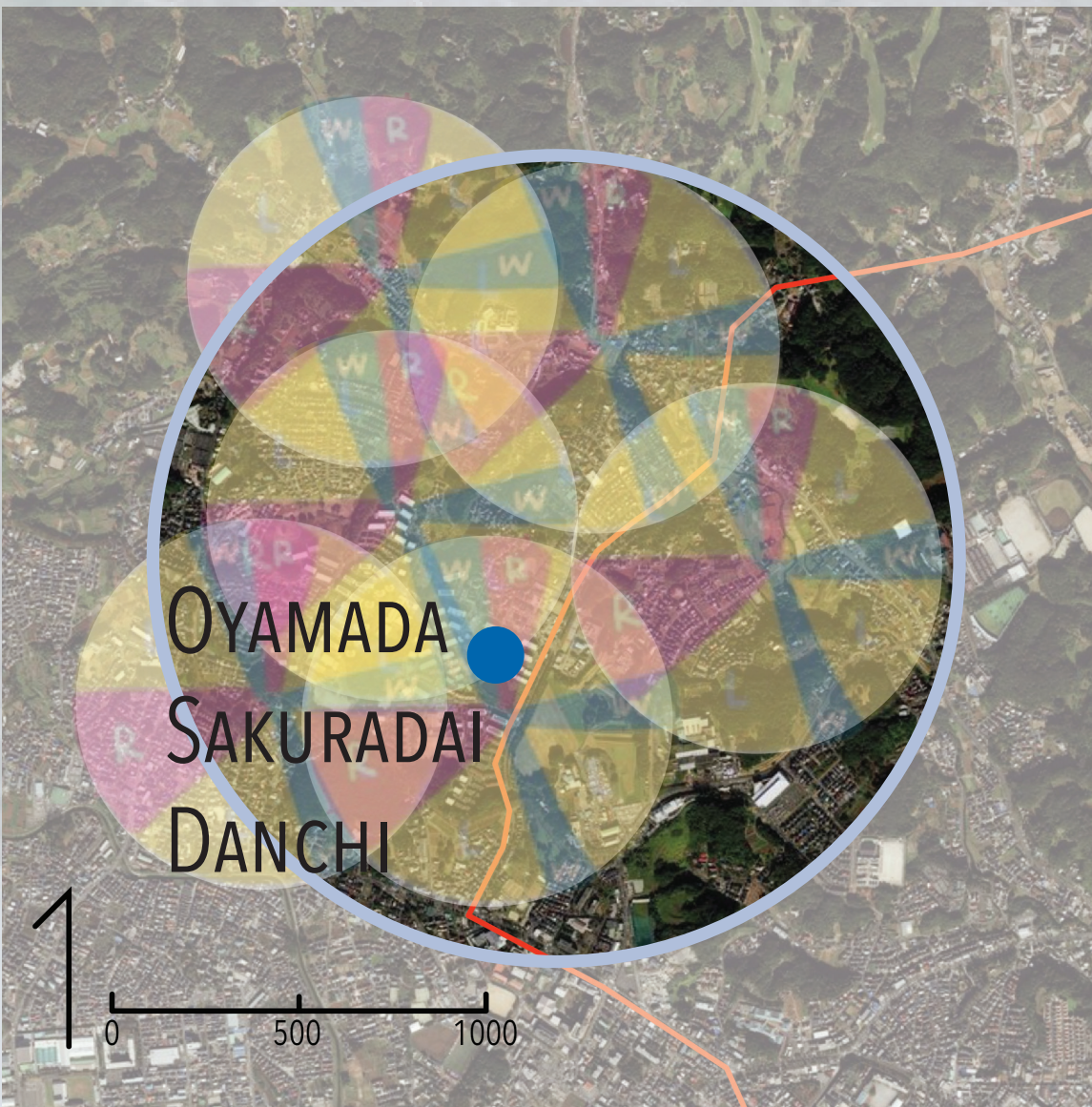


a 1km diameter area services by a Telecore at its center  
中心部に「テレコア」を持つ直径1kmのサービス圏

**TELECORE**  
テレコア

a teleworker office created out of a underused or vacant buildings that also holds childcare spaces  
テレワーカーのためのコワーキングスペースと子育て施設を併設するサービス拠点

**CASE STUDY AREA**



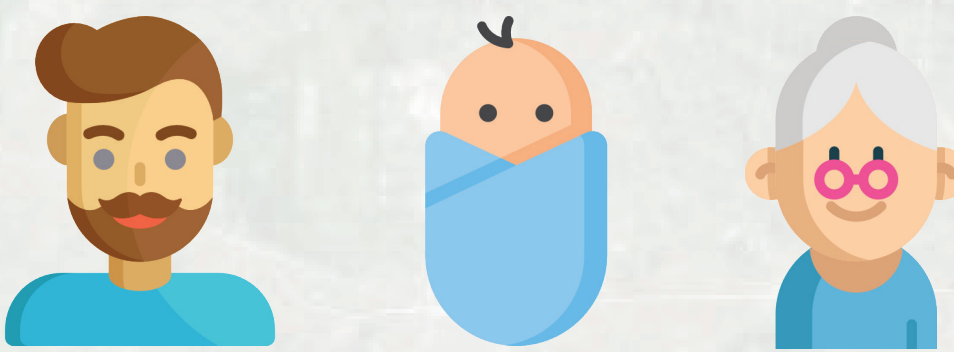
## IN PRACTICE | 使用例の想定

TELECOMMUTER FAMILY



This family chose to live in the Oyamada Sakuradai Danchi and because they wanted to balance the typical work life with the desire for a rural lifestyle.  
通勤者・テレワーカー・2人の子供の4人家族を想定

### WEB BABER APP



Baber is an app connecting parents looking for childcare to vetted retirees living in their telecore. This provides periodic childcare allowing telecommuters to stop by their office.

子供を短時間預けたい親と地域高齢者のマッチングをサポートするアプリ



### MON-TUE TELECORE DANCHI MODEL



The Danchi Model will repurpose vacant units in a Danchi into a workspace for teleworkers.  
団地の住棟の一部をリノベーションしたテレコア

### THU-FRI TELECORE FARM MODEL



The Farm Model will repurpose farm and community buildings into a workspace for teleworkers. They can also rent plots of the adjacent farm to grow their own crops.  
農地に隣接したコミュニティ施設等を再活用したテレコア。農地は市民農園として使用者が借りることができる

**TIME SAVINGS** 120 HOURS/MONTH ▶ 63 HOURS/MONTH

## SWOT ANALYSIS | SWOT分析

**STRENGTHS**

Farmlands and green area  
Rural character  
Proximity to universities

**OPPORTUNITIES**

Extention of monorail

**WEAKNESSES**

Poor transportation  
Ageing population (farmers & residents)

**THREATS**

Overdevelopment  
Decline of farmland

## TELECORE NPO MANAGEMENT | NPO団体によるテレコアの運営

